



BURLINGTON HIGH SCHOOL

SCHOOL PROFILE 2009-2010



Burlington High School
52 Institute Road
Burlington, VT 05408

(802) 864-8581 Telephone

(802) 864-8408 Fax

<http://bhs.bsdt.org>

CEEB Code - 460085

ADMINISTRATION

Principal

Amy Mellencamp
amellenc@bsdt.org

Assistant Principals

Beth Giese
Herb Perez
Brian Williams

GUIDANCE OFFICE

Guidance Director

Patty Wesley
pwesley@bsdt.org

Registrar

Colleen McSweeney
cmcsween@bsdt.org

Administrative Assistant

Heather Sienkiewicz
hsienkie@bsdt.org

School Counselors

Yvette-Amblo Bose
yamblo@bsdt.org

Erin Dufault
edufault@bsdt.org

Sean Padden
spadden@bsdt.org

Larissa Urban
lurban@bsdt.org

Community

Burlington High School is located in Burlington, Vermont. With a population of approximately 39,000, Burlington is the **largest and most diverse city** in the State of Vermont. It sits in a unique picturesque location on the eastern shore of Lake Champlain, between the Green Mountains and the Adirondacks.

The University of Vermont, St. Michael's College, Champlain College, and the Community College of Vermont are among **the institutions of higher education** located in the area. The Vermont Symphony and Youth Orchestra, the Vermont Mozart Festival, the Flynn Center for Performing Arts, and the Fleming Museum, along with a **variety of other cultural opportunities**, are all found in Burlington. A major refugee resettlement program has made Burlington **the home of immigrants and refugees speaking 35 languages**, giving both the high school and the community an unexpected international flavor.

High School

Burlington High School offers a **comprehensive and challenging college preparatory program** with an emphasis on academic excellence and intellectual curiosity. The **mission** of the school encourages students to **be independent, motivated, and socially responsible**.

Due to Burlington's designation as a **refugee resettlement center**, students from all over the world interact with native Vermont students who themselves come from a broad range of socio-economic backgrounds. The result is a **high school population of 1,125** that is uniquely and interestingly diverse, an **urban school** in the midst of one of the country's smallest and most rural states.

All Burlington High School students are required to complete **10 hours of community service each year** as part of the charge "to educate and inspire students to influence and shape the future." Students also engage in a **broad range of co-curricular activities** including a recognized drama program, competitive sports teams, and literary, recreational and arts clubs and programs.

Faculty and Accreditation

Burlington High School is **accredited** by the New England Association of Secondary Schools and Colleges and the Vermont Department of Education. Among its **professional faculty and staff of 105**, most have pursued graduate study, and nearly **78% hold a Master's Degree or higher**. Faculty members are active in regional and national professional organizations.

Curriculum

Over **180 course offerings**, primarily college preparatory or honors classes, are available in twelve disciplines.

- **Honors level courses** in each discipline are designated by an **asterisk (*)** on student transcripts. Grades are **unweighted**.
- **Advanced Placement courses** are offered in Biology, Calculus, Chemistry, English Literature and Composition, French, Latin, Music Theory, Spanish, Statistics, Studio Art, U.S. Government and Politics, U.S. History, and World History.
- Qualified students may enroll concurrently in **college and university courses**.
- **Support classes** for the more than 108 students learning English for Speakers of Other Languages and for students with learning challenges are also available.
- Students may earn credit through **community learning, workplace internship, and teacher aide programs** as well as through **remedial skills and individual services programs** such as ASPIRE and the Student Support Center.
- The Burlington Technical Center, located on the BHS campus, and the nearby Center for Technology in Essex, **offer rigorous career pathway classes** resulting in dual enrollment with high school and college credit and industry certifications. 34% of Burlington High School juniors and seniors attend technical center classes.

Post-Secondary Plans

Class of	2006	2007	2008	2009
Four-year Colleges	66%	66%	66%	61%
Two-year Colleges	13%	19%	18%	18%
Military	1%	1%	1%	1%
Full-Time Employment	16%	9%	11%	16%
Other	4%	5%	4%	4%

BHS Requires 24 Credits to Graduate

English (4.0 Credits Required)
English 9, Elements, *Narrative Patterns**; English 10, Lit/Wr/Sp, *Genre**; American Literature 11, Traditions, *Seminar**; English 12, Adv Comp, Cinema Studies, Creative Writing, Modern Lit, Poetry, Speech, World Lit, *Chaucer/Shakespeare**, **AP Literature and Composition***

Science/Tech. (3.0 Credits Req.)
Biology, Biology 1, *Honors Bio**; Chemistry, Chemistry 1, *Honors Chem**; Physics, Physics 1, *Honors Physics**; Tech Ed I, II, Topics in Tech, Photography; Environmental Science, *Physics 2**, **AP Biology***, **AP Chemistry***

History (3.0 Credits Required)
9th Civics/World Soc, Civics/World Soc I, *Civics/World Soc Honors**; 10th World/US, World/US I, *Honors World/US**; 20th Century, 20th Cent I, *20th Cent Honors**, **AP US History***; Anthropology, Economics, History/Movies, Psychology, Public Issues, **AP US Government***, **AP World History***

Mathematics (3.0 Credits Req.)
Elements/Math, Pre-Algebra, Algebra I, Geometry, *Geometry Honors**, Algebra II, *Algebra II Honors**, PreCalculus, *Honors PreCal**, Trig/Discrete, Applied Personal Math, *AP Statistics**, *Calculus**, **AP Calculus***

World Lang. (2.0 Credits Req.)
French I-V, **AP French***
Spanish I-V, **AP Spanish***
Chinese I-V; German I-IV
Latin I-IV, **AP Vergil***

Art/Music (1.0 Credit Required)
Art 1, *Art 2 and 3**; Metals in Art, Clay; Band, Chorus, Strings, Jazz Band, Madrigals, Music Explorations, **AP Elementary Harmony***; *Advanced Harmony**

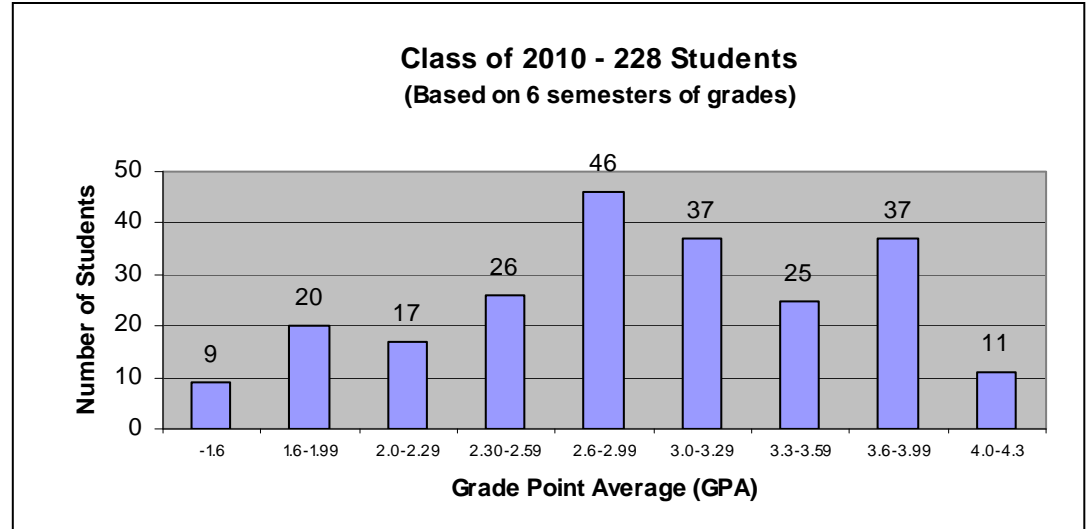
P. Ed/Health (2.0 Credits Req.)
Phys Ed 9 and 10, Movement, Advanced PE, Health, Intn Foods

Business/Tech. (1.0 Credits Req.)
Computer Lit, Career Explorations
Business Law, 21st Cent Bus Applications, Marketing, Personal Finance, Accounting 1-11

Specialized Courses (1-4 Credits)
ELL: Reading, English, Science, Social Studies, Math; Teachers Aide, Peer Tutoring, Internships

Burlington Technical Center
(*Elective 11-12th Grade Credits*)
Aviation, Computers, Criminal Justice, Culinary, Engin./Arch, Design Illus./**AP Studio Art***, Sports Medicine, Human Services, Auto Body, Auto Tech, Welding, Electronic Recording Arts
**Honors Courses*

Grading System/Points UNWEIGHTED			Percentile Distribution Class 2010 # St. GPA			Honors Distinctions Class 2010 # St. GPA			ACT/SAT/AP Results 2008-2009	
A+	97-100	4.333	Top 10%	23	3.889+	<i>Summa cum laude</i>			ACT Composite Score	
A	93-96	4.000	Top 20%	46	3.619+	1 4.1-4.33			24.2	
A-	90-92	3.666	Top 30%	70	3.333+	<i>Magna cum laude</i>			94 Students	
B+	87-89	3.333	Top 40%	92	3.182+	29 3.8-4.09			SAT Mean Scores	
B	83-86	3.000	Top 50%	115	2.938+	<i>Cum laude</i>			Reading 548	
B-	80-82	2.666	Top 60%	138	2.762+	24 3.5-3.79			Mathematics 547	
C+	77-79	2.333	Top 70%	161	2.555+	National Merit Program # Finalists/Commended			Writing 529	
C	73-76	2.000	Top 80%	184	2.298+				137 Students	
C-	70-72	1.666	Top 90%	207	1.946+	2009 3 12 2008 3 6 2007 2 5 2006 2 4			AP - 13 Tests	
D+	67-69	1.333	Mean GPA = 2.928						79% scores 3 or higher	
D	63-66	1.000	Number of Students						123 Students/233 Tests	
D-	60-62	0.666	Ranked - 228						AP Tests Required	
F	0-59	0.000								



2009 COLLEGE ACCEPTANCES

Alfred University	Dartmouth College	Lewis & Clark Coll.	Rice University	U of Delaware
American Int Coll.	Daton State Coll.	Lyndon State Coll.	Rochester Inst Tech	U of Denver
American U	Drew University	Lynn University	Roger Williams U.	U of Illinois
Anna Marie College	Drexel University	Marist University	San Diego Mesa	U of Maine
Arcadia University	Dutches Comm Coll	Marlboro College	Santa Fe College	U of Maryland
Bard College	E. Carolina U	Marquette U	Santa Monica Coll.	U of Mass Amh
Bay State College	Edison State Coll.	Md. Inst. Coll. Art	Sch Mus Fine Arts	U of Mass Boston
Becker College	Elmira College	Marymont Manht.	Seton Hall U.	U of Miami
Beloit College	Elmiron Collge	McDaniel College	Siena College	U of Michigan
Bentley College	Elon University	McGill University	Simmons College	U of Nevada
Boston College	Emmanuel College	Middlebury College	Smith College	U of New England
Boston University	Eugene Lang Coll.	Monmouth U.	Southern. N.H. U.	U New Hampshire
Bowdoin College	Fisher College	Montana State U.	Southern VT Coll.	U of New Haven
Brown University	Fordham University	Montana State-Boz	Springfield College	U of New Mexico
Bryant University	Georgetown U.	Moravian College	St. Joseph's U.	UNC Charlotte
Carleton College	Gettysburg College	Muhlenberg College	St. Lawrence U.	U of North Dakota
Carnegie-Mellon	Gonzaga University	Nevada State U.	St. Mary's College	U of Pittsburgh
Castleton State Coll.	Greensboro College	New England Coll.	St. Michael's Coll.	U of Puget Sound
Champlain College	Grinnell College	New Englnd Inst-Art	Stonehill College	U of Rochester
City Coll. San Franc	Guilford College	New York U.	Suffolk University	U of S. Florida
Clarkson University	Hamilton College	Nichols College	SUNY Potsdam	U of South. Maine
Clemons University	Hawaii-Pacific Coll.	Northeastern U.	SUNY Stony Brook	U of Vermont
Clinton Community	Hofstra University	Norwich University	Swarthmore College	U of Wisconsin
Colby-Sawyer Coll.	Indiana U-Bloom.	Notre Dame U.	Syracuse University	Utica College
Colgate University	Iona Collge	Pace University	Thomas College	Vassar College
Coll. of Charleston	Ithaca College	Palm Beach Comm.	Tufts University	Vermont Tech
Coll. Of S. Nevada	Johnson & Wales	Parsons School Des	Tulane University	Villanova U
Coll. of Will/Mary	Johnson State Coll.	Philadelphia U	Union College	Virginia Tech
Colorado State U.	Keene State Coll.	Piedmont College	Universal Tech. I.	Washington
Columbia Coll Chic	Kenyon College	Plattsburgh State	U of Cal. Davis	UWentworth Inst.
Comm. Coll. of VT	Lake Forest Coll.	Pratt Institute	U of Cal. Santa Bar	Wesleyan U.
Comm. Coll. Tampa	Lafayette College	Providence College	U of Chicago	Western N.E. Coll.
Cooper Union	Landmark Coll.	Purdue University	U of Colorado Boul	Westminster Chr
Cornell University	Loyola College	Quinnipiac U.	U Colorado ColSpr	Williams College
Curry College	Lehigh University	Rhode Is Sch Design	U of Connecticut	Wyoming Tech I.